

J&M Rear Lower Control Arms - Red (05-14 All)

I Required tools:

1. 18 mm wrench / socket
2. Flathead screwdriver
3. Thread glue
4. Floor jack
5. Jack stands
6. Hammer with rubber head
7. zip ties

Note: This install was completed with J&R rear lower control arm , but this installation instruction can be referenced for any brand rear lower control arm in 2005-2014 Mustang.

II Instruction

1. Carefully raise the rear of the car by placing the floor jack at the rear lift location. Use jack stand to protect the car.
2. Remove the rear wheel.



3. Remove the parking brake cable cotter using the flathead screwdriver. Cotter is located behind the brake dist.



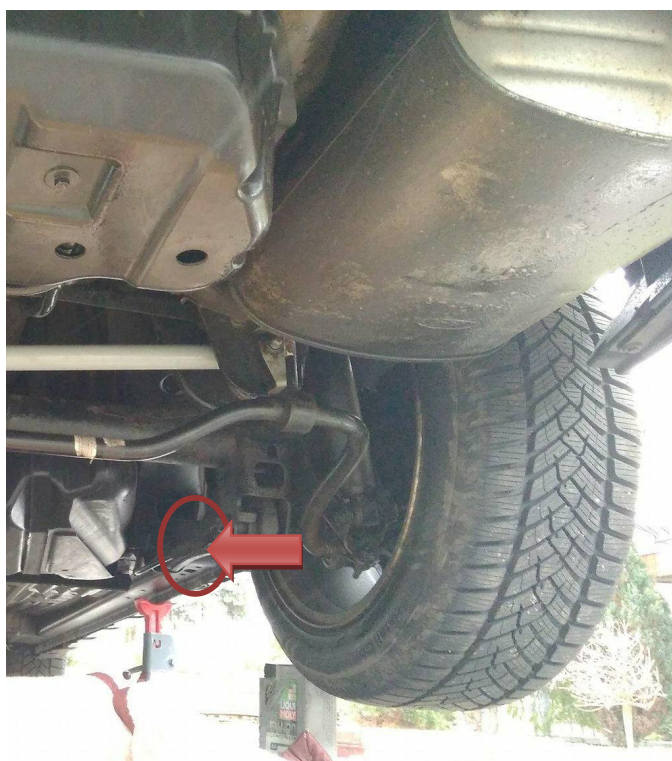
4. Release the brake cable from the caliper and take out from factory lower control arm.



5. Unscrew the lower control arm screw using 18mm wrench / socket. Start with the screw that is located near shock, head of the screw is located from inside side of the car. Do not take out the screw because will fall down and will make next screw harder to unassemble.



6. Unscrew the second and the last screw using 18mm wrench / socket. Screw is located from outside of the car.



7. Take out both screw and unassemble the factory rear lower control arm.
8. Assemble the poliuretan bushing according to manufacture instruction.
9. Clean the surface where will came new lower control arm from rust, dirt and lubricate with grease included.
10. Assemble new rear lower control arm starting from site from screw number 1. on the picture and after screw number 2. Use thread glue for both screws to protect the connection from unscrewing by vibrations. In case of problem to fit the new rear lower control arm use hammer with rubber head to push part to the right position. Use zip ties to catch parking brake cable to the rear lower control arm.



11. Assemble the parking brake cable to the caliper and assemble the cotter like at the beginning.



12. Assemble the wheel and screw the lug nuts.

13. Start with the second site of the car which have the same procedure.

