

Removal and install of steering wheel for s197 mustang

Tools needed:

Socket wrench

8mm socket

24mm socket

Small flat screw driver

5/32 allen wrench

1/8 allen wrench

T10x4 torque

Torque Wrench



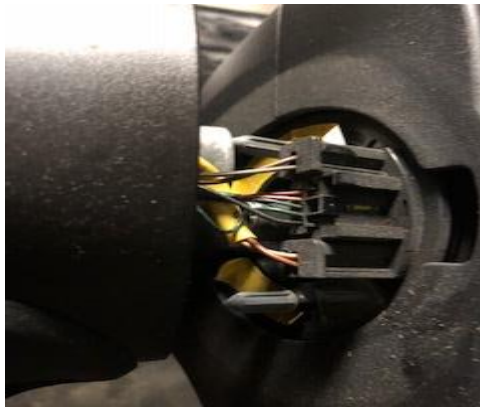
1. Disconnect the battery (ground) and wait 5 to 10 minutes to insure the power has drained out of the system. If you want you can also pull the airbag fuse from the SJB found on the passenger side kick panel fuse #17 which is 10 amp fuse.



2. Pull off the two plastic caps on the sides of the wheel to access the two bolts that hold the airbag



3. Unscrew bolts with 8mm socket
4. Pull off the airbag assembly and disconnect the two electrical connectors. Pinch the side of the connector and pull up



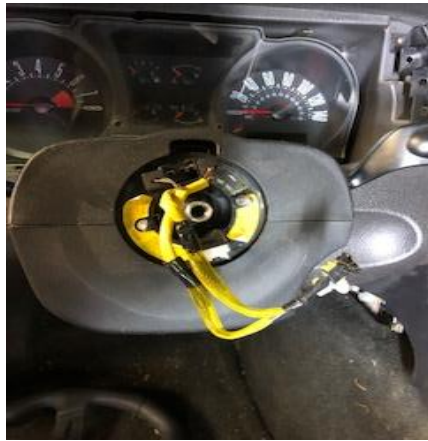
5. Disconnect the cruise control electrical connector, you will see a tab at the top of the connector, use a small flat screw driver to lift up tab and pull out on connector to remove.



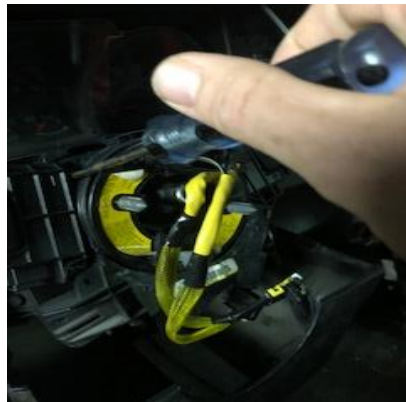
6. Use 24mm socket to remove the main steering wheel bolt.



7. Remove wheel



8. Take out four torq bolts with t10x4 torque driver on the clock spring to remove



9. After the screws are removed on the clock spring, there is an electrical harness at the bottom that needs to be unplugged use the small flat screw driver again just like the cruise control harness. Then you will have just the steering wheel shaft.



10. Now slide on the momo hub and torque the hub with a 22 mm socket to 41lbs foot



11. Now use the horn mount to attach in between the hub and steering wheel



12. Now mount the steering wheel and horn mount to the hub with the supplied torque screws



13. Slip in the center piece then your done.

