

SpeedForm ABS Rear Window Louvers (05-14 Coupe)

Time Necessary: Approximately 1-hour

Tools Required:

- Adjustable Wrench
- Sharpie Fine Tip Permanent Marker
- Rear Window Louver Hardware Kit (Provide by American Muscle)

Before Pictures:



Figure A: Rear Window without SpeedForm ABS Rear Window Louvers

Rear Window Louver Hardware Kit: (Provide by American Muscle)



Figure B: Hardware Kit

SpeedForm ABS Rear Window Louvers Installation Procedures:

1. Place the SpeedForm ABS Window Louvers onto the rear window.
 - a. Align the corners of the window louvers with the corners of the rear window. (Figure C)



Figure C: SpeedForm ABS Window Louvers Alignment

Note – The bottom of the window louvers will slide underneath the top of the trunk. (Figure D)

- b. Utilize the Sharpie permanent marker to mark the (6) holes around the edge of the window louvers; (2) at the top, (2) on the right and (2) on the left. (Figure D)

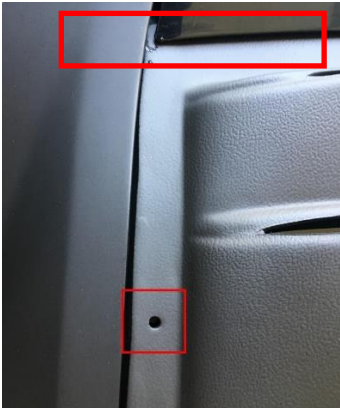


Figure D: Hole Location and Bottom of Window Louvers Underneath the Top of the Trunk

2. Remove the SpeedForm ABS Rear Window Louvers from the rear window.
 - a. Locate and ensure the (6) dots are easily visible.
3. Utilize the adjustable wrench to remove the nut and washer from each of the (6) attachment brackets. (Figure E)



Figure D: Attachment Brackets

4. Utilize the provided alcohol wipes to clean the rear window around each black dot.
 - a. **Do Not** wipe away the black dot.
5. Utilize the provided 3M adhesion promoter and wipe around each black dot.
 - a. **Note – Do not wipe the 3M adhesion promoter onto the car's paint**
6. Remove the plastic on the attachment bracket's 3M tape
7. Attach all (6) attachment brackets to the rear window. (Figures E and F)
 - a. Carefully align the attachment bracket peg with the black dot.
 - b. The thin side of the attachment bracket faces outward.
 - c. Ensure the thin side of the attachment bracket is parallel with outer edge of the rear window.

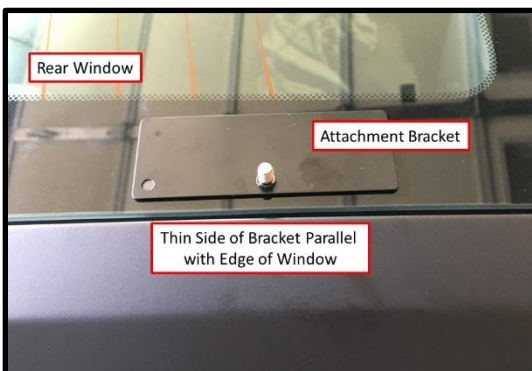


Figure E: Attachment Bracket Alignment

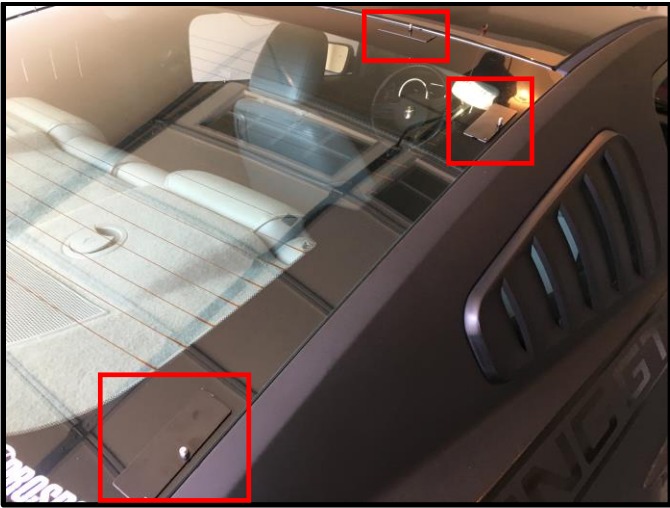


Figure F: (3) Attachment Brackets on Right Side of Rear Window

8. Utilize the provided bottle of clear super silicone sealant to seal the edges of each attachment bracket. (Figure G)
 - a. Allow the silicone to dry for approximately 10-minutes.

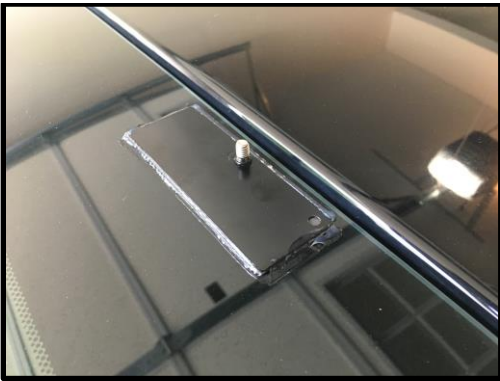


Figure G: Attachment Bracket with Clear Super Silicone Sealant

9. Place the SpeedForm ABS Window Rear Louvers onto the rear window. (Figure H)
 - a. Align each of the holes with the attachment bracket pegs and firmly press down.



Figure H: SpeedForm ABS Rear Window Louvers Attached with Attachment Bracket Pegs through (3) Holes

10. Utilize the adjustable wrench to reattach the nut and washer to each attachment bracket. (Figure I)



Figure I: Nut and Wash Reattached to Attachment Bracket

After Installation Pictures:

