

Installation Instructions for Steeda IRS Subframe Braces – Fastback (15-17 all)

Installation Time: 1 hour

Tools Required:

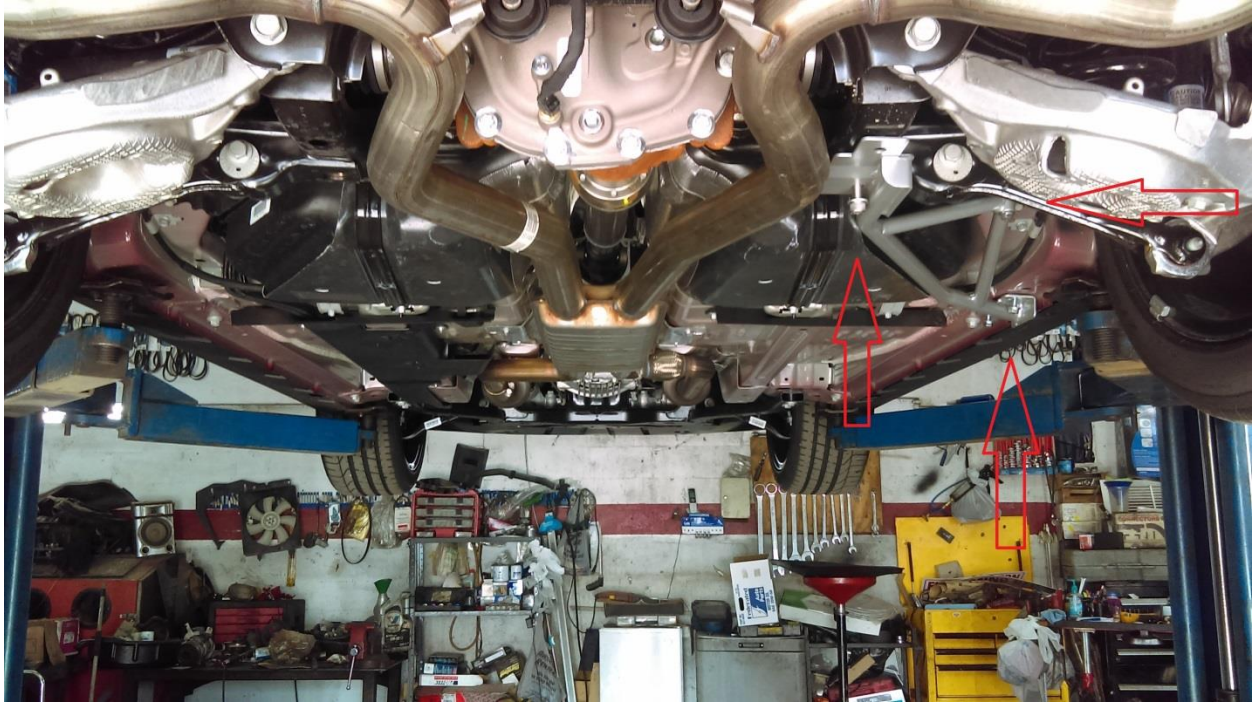
- ✓ Lift or Jack and jack stands
- ✓ 10mm allen key
- ✓ 15mm socket and ratchet
- ✓ Torque wrench
- ✓ Safety glasses
- ✓ Gloves

Notes: Your exhaust will probably be hot. Be careful not to come in contact with it or bump your head on anything while under the car.

Step 1: Get your car off the ground with your lift or jack stands

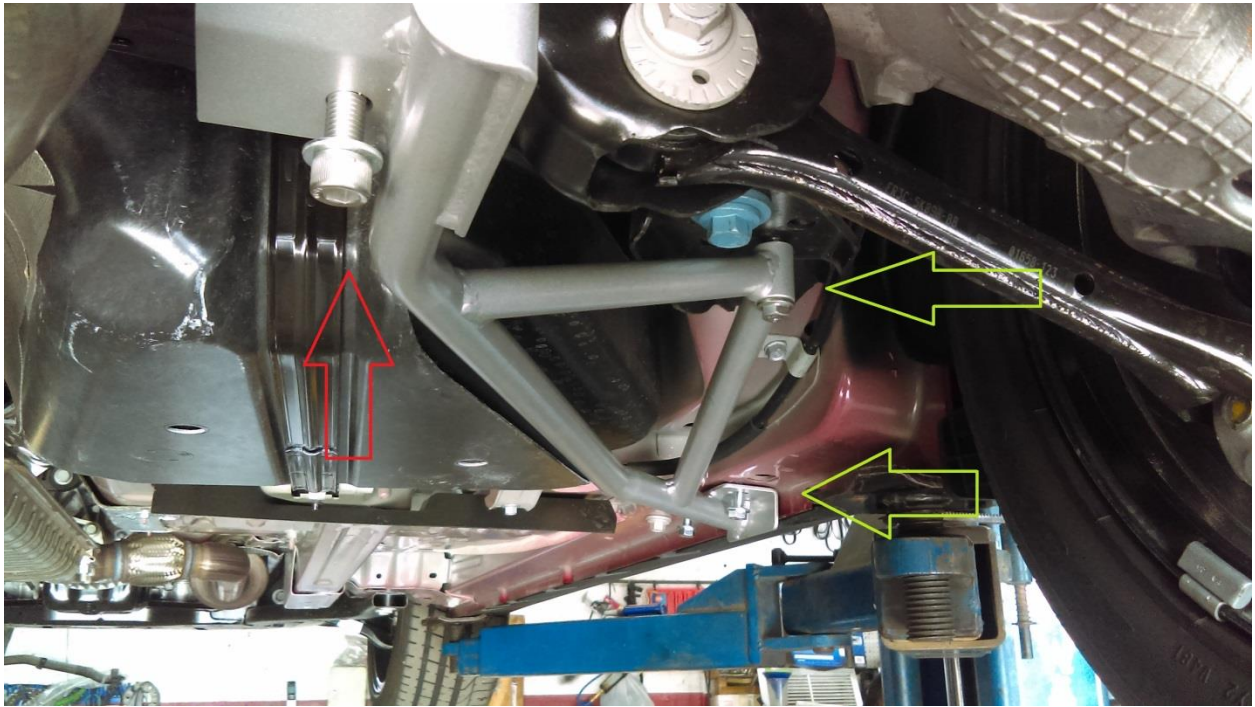


Step 2: Lift the braces into position and loosely thread in the supplied hardware



Note: You will need to remove a useless bolt where the front of the brace connects to the frame. The forward most connection point on the brace will secure to the same hole you removed the useless bolt from.

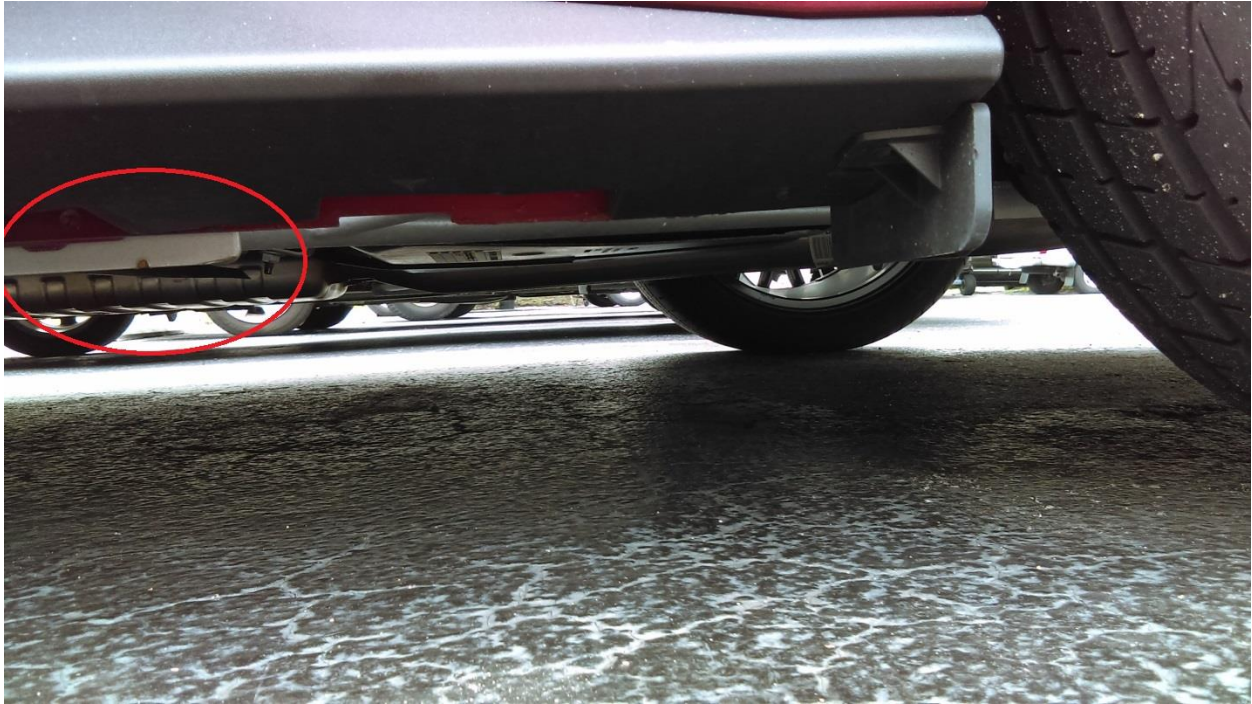
Step 3: Tighten all the connections and torque to spec. Front 3 bolts (Green Arrows) are 45ft/lbs and the rear 2 bolts (RED ARROW) are 55ft/lbs



Step 4: Repeat process on other side. Put your car back on the ground and start shredding those tires.



Note: You will be able to see the brace from the side view of the car. Your side splitter should cover most, if not all of the overhang



Installation Instructions Created and Submitted by AmericanMuscle customer, James B. – August 29th 2016. Work completed on “Dorothy” his '16 Mustang GT w/PP