

## **T-REX Billet Logo Mounting Plate for OE Grille Emblem (05-09 GT, V6)**

### **Time Necessary:**

Approximately 10-15 Mins

### **Tools Required:**

- 10mm Socket/Wrench
- Drill ( $\frac{3}{8}$ " Drill Bit) / Saw  
(NEEDED IF INSTALLING ON  
FACTORY GRILLE)

### **Parts Included:**

- (1) Billet Logo Plate
- (2) 10-32 x 1.5" Threaded  
Stud
- (2) 10-32 Nylon Lock Nuts
- (4) #10 Fender Washers



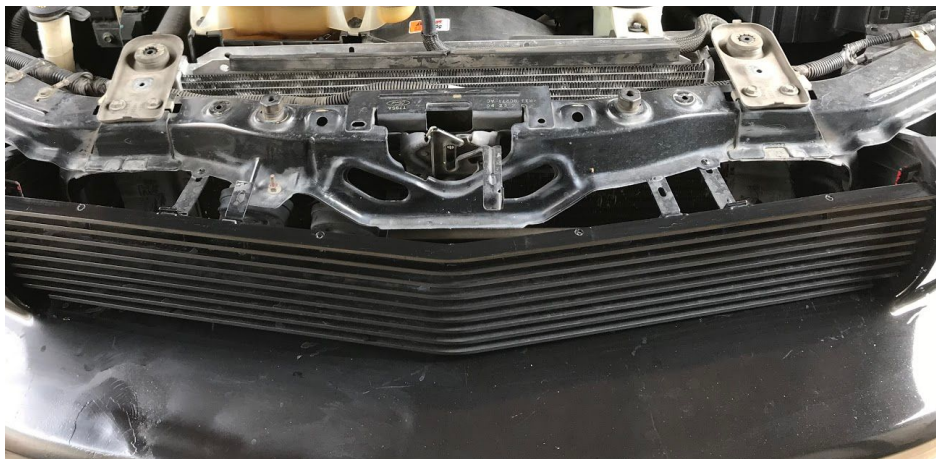
### **Separate Non-Included Parts Required:**

- (1) Ford Running Pony Grille Emblem (shown above)
- (4) Pin Nuts (shown in small bag)

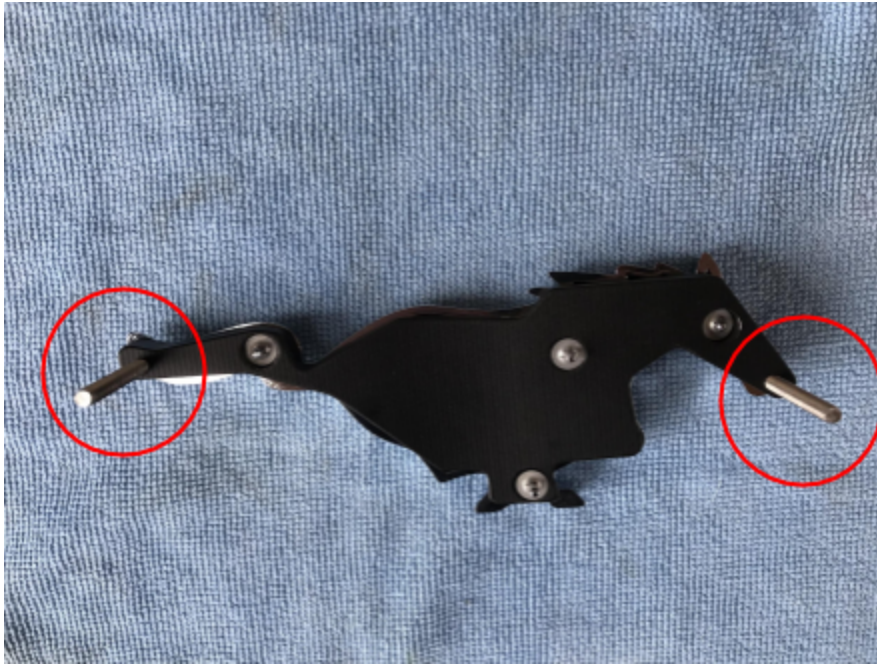
**Please Note:** If you are installing the logo plate onto a factory grille you must drill holes into the factory grille due to the OEM retaining nuts interfering with the logo mounting area a  $\frac{3}{8}$ " hole aligned with the nuts will allow the grille to hold the logo properly, or you may also cut out the honeycomb grille and install the plate in its place. The mounting plate was meant for the T-Rex grille but will also fit on a Modern Billet Black Retro Billet Grille with some minor adjustments.

**Installation Instructions:**

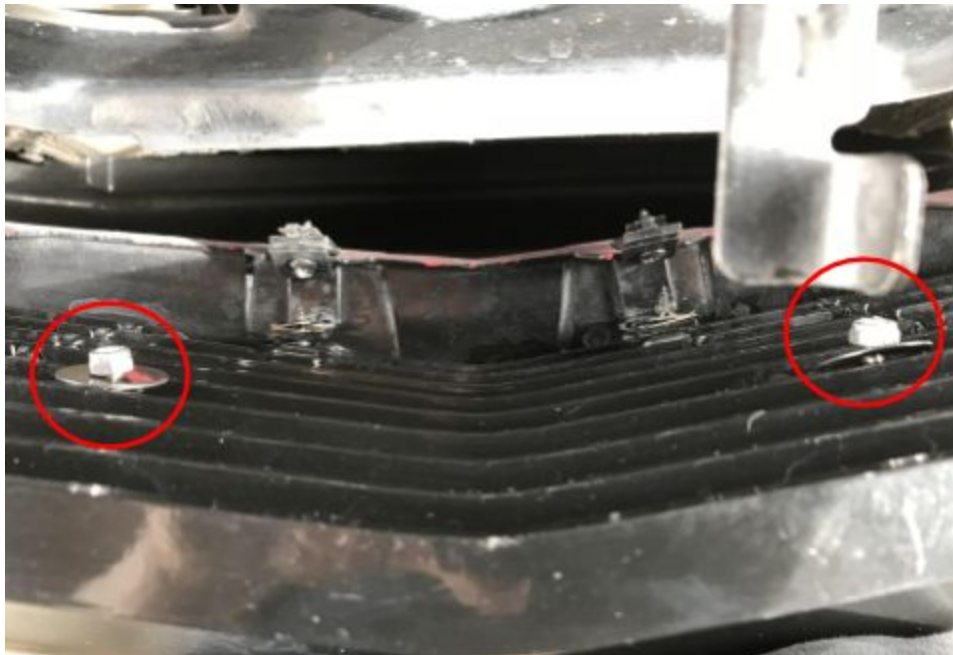
**Step 1:** Remove the radiator cover push pins for easier installation



**Step 2:** Screw in the studs as shown below



**Step 3:** Place the washers provided on the studs, The first two right behind the plate and the other two behind the plate and grille as shown below next screw on the provided nuts with a 10mm socket/wrench





**Step 4:** Enjoy your new Ford Running Pony Grille Emblem!



Installation Instructions Written by AmericanMuscle customer Juan Fuerte 11/6/17