

MGP Caliper Covers Installation Guide

***Before starting, ensure that the front and rear clips remain separate as they are different.**



Note: Some brake pads have wire clips from the factory. This clip interferes with the Caliper Cover and pushes it closer to wheel. Cut off this clip as show.

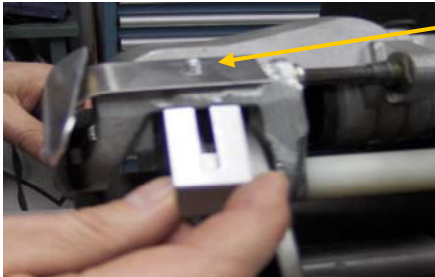
***Use safety goggles**

1. Place Caliper Cover in place. Note: Caliper Cover attaches to the caliper bracket as shown.



Bridge should rest on caliper

2. Slid clip into place. Fasten caliper cover to caliper bracket. Note: Clip is bendable, bend to make snug fit as needed.



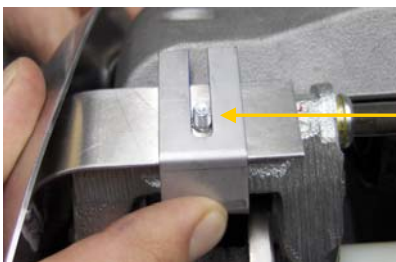
Slide clip onto caliper bridge and under bracket between brake pads as shown.

Bend clip in or out for adjustment to fit as needed.



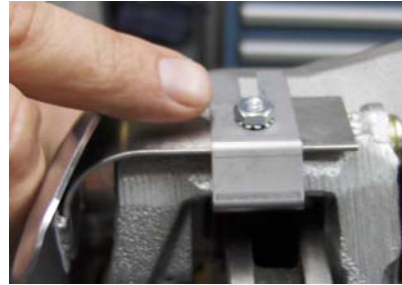
Note: You can bend down clip for extra security

3. Install Clip by pushing it onto Bracket (between brake pads) and on top of Caliper Cover Bridge.



Push Clip on to approximate position as shown. Clip will not "bottom out".

4. Install nut and tighten lightly to a "snug" pressure with finger tips. No need to over tighten.



5. Tighten with wrench about a ¼ Turn or torque at 25 inch pounds.

Do not over tighten.



6. Repeat installation on opposite side for completion.



7. Re-Install Wheel and tighten lug nuts per Manufacturers recommendations.

8. Rotate wheel and inspect for rubbing or interference from CaliperCovers. Some OEM Wheels have very little clearance.



Visit our website to see our installation video.

www.CaliperCovers.net

619.754.4099