

How to Install a Pype-Bomb Axle-Back Exhaust for 2005-2010 Mustang GT and GT500



The below installation instructions work for the following products:

- [Pypes Pype-Bomb Axle-Back Exhaust \(05-10 GT, GT500\)](#)

Here at American Muscle, we're all about DIY (do it yourself). Of course, there's nothing wrong with seeking out a little bit of tech help prior to taking on an installation on your own. Our Mustang installation guides will provide valuable instructions and hopefully answer any how-to questions that you may have along the way.

Tools needed:

- 13 mm wrench
- 15 mm wrench
- WD-40

Time Needed for Installation: Approximately 1 Hour

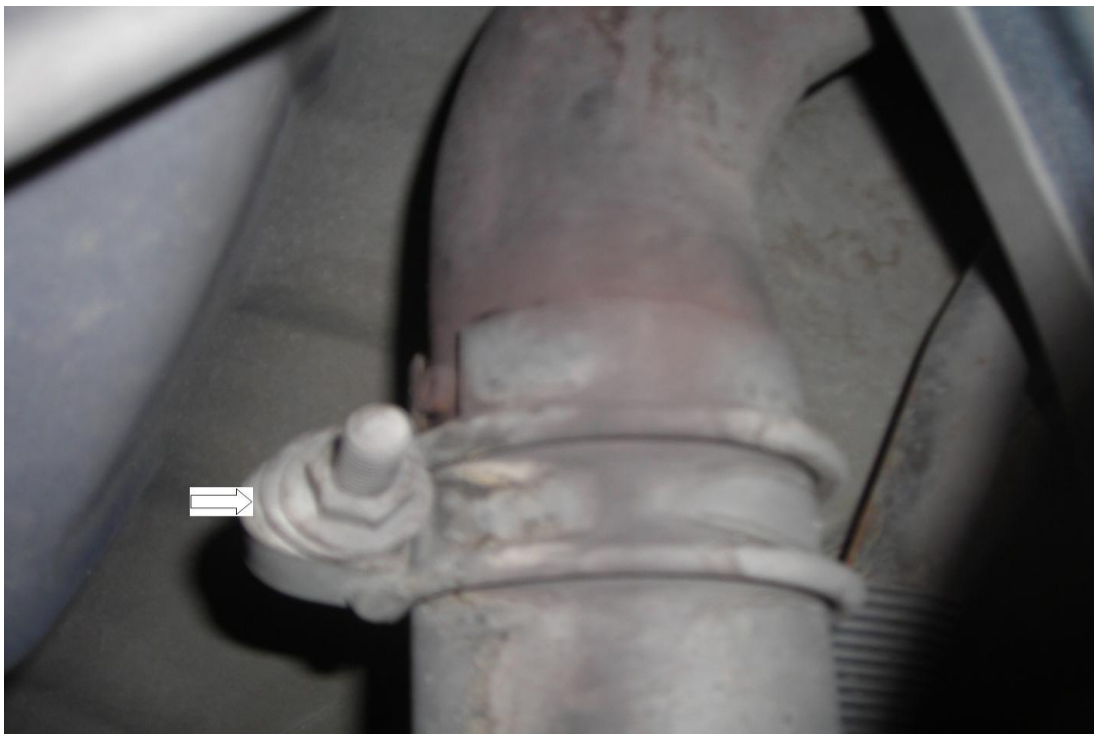
Before you begin installation, you must first elevate the car using ramps, a lift, or a jack to provide for easier installation. If using a jack then place it under rear axle and lift the car to desired height, then place jack stands underneath both sides of rear axle. If using ramps then make sure the parking brake is on to eliminate any movement of the car. For your safety you must make sure that the vehicle is secure while you are working under it to prevent any injuries that can occur. It is important that you also wear safety glasses while working underneath the car to prevent debris from falling into your eyes. Also make sure that the current exhaust has cooled down before you begin to remove it.



Pypes Pype-Bomb Axle-Back Exhaust

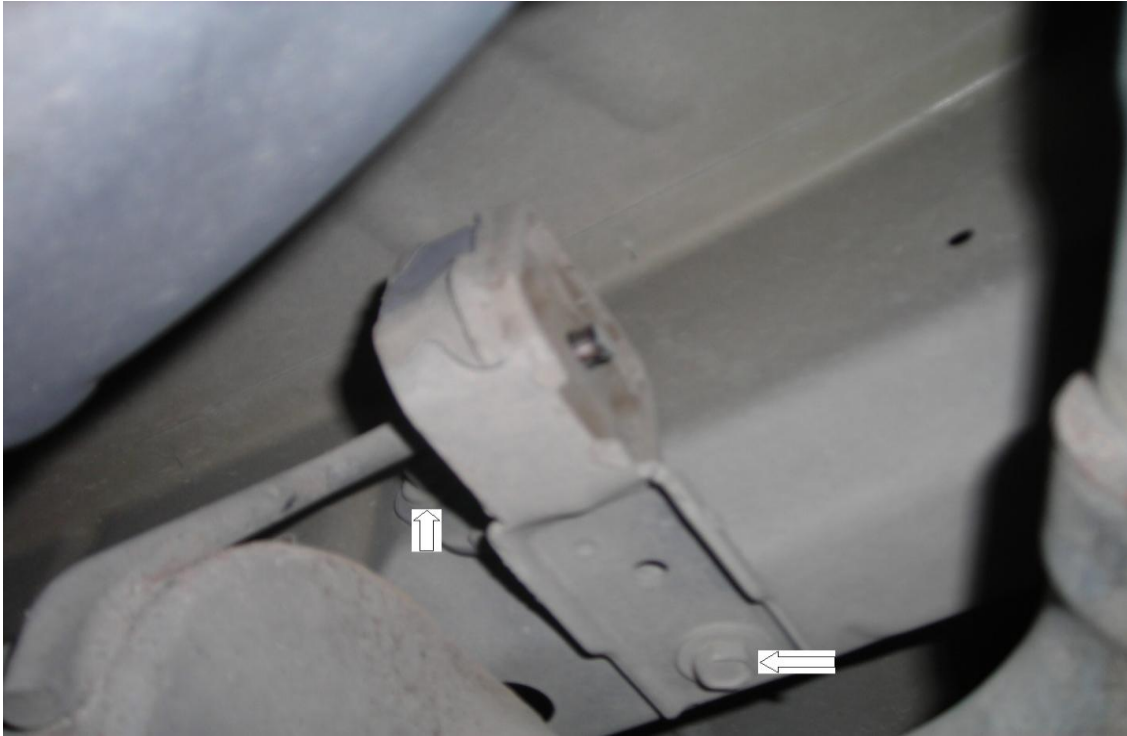
Installation:

1. Begin installation by removing the exhaust hangers and clamps that are on your current mufflers. First, apply WD-40 generously to the bolt on the exhaust clamps and all bolts on the exhaust hangers and let it soak for a few minutes, then use a 15 mm wrench to loosen the exhaust clamps that attach your current mufflers to the mid-pipe. Once the clamp is loose, slide it down the neck of the muffler.



2. Remove exhaust clamps by loosening the bolt holding it in place with a 15 mm wrench and sliding it down the neck of the muffle

3. Now using a 13 mm wrench, remove the two bolts that hold each **exhaust hanger** in place. Some bolts on the exhaust hangers may be harder to get to because of their placement.



4. Remove exhaust hangers by removing the two bolts holding them in place with a 13 mm wrench
5. After all exhaust hangers have been removed, slide off your current exhaust by pulling it away from the mid-pipe.



6. Slide the existing mufflers off of the mid-pipe to remove them.
7. The next step is to place the exhaust hangers in the correct position on the new Pype Bomb exhaust. Then slide the new exhaust clamps onto the neck of the pipe and begin to re-attach the exhaust hangers.
8. First you must attach the neck of the Pype Bomb to the mid-pipe by sliding it into place. Once the Pype-Bomb is attached to the mid-pipe, you can then continue to bolt the exhaust hangers back into place using a 13 mm wrench. It should be easier to re-attach the exhaust hangers on the Pype Bomb because you will have more room to work with than your factory mufflers. Do not tighten these bolts yet to ensure correct placement of the muffler. Once you have placed the muffler in the desired position, you can then tighten the bolts on all of the exhaust hangers.

After the hangers are back in their correct position, you can tighten the bolt on the exhaust clamps by using a 15 mm wrench. You will want to make sure that the exhaust hangers and clamps are bolted as tight possible to ensure that your exhaust will not come loose in the future.



10. Tighten the bolt on the exhaust clamp that connects the neck of the Pype Bomb to the mid-pipe by using a 15 mm wrench
11. The installation is now complete; the final step is to take the car for a test drive to enjoy the sound and performance of your new exhaust. After the test drive, check to make sure all parts are still in place and tighten any loose bolts if necessary.